

# Road and Trail Restrictions

Roads and Trails shown in orange on the map are closed to vehicle travel during the time periods shown below.



Restriction	12/1 to 3/31	12/1 to 3/31	12/1 to 3/31	No Restrictions
3	12/1 to 3/31	12/1 to 3/31	12/1 to 3/31	No Restrictions
4	Yearlong	No Restrictions	No Restrictions	No Restrictions
8	12/1 to 3/31	12/1 to 3/31	12/1 to 3/31	12/1 to 3/31
9	Yearlong	12/1 to 3/31	12/1 to 3/31	12/1 to 3/31
10	8/30 to 1/1	8/30 to 1/1	8/30 to 1/1	8/30 to 1/1
20	Yearlong	Yearlong	No Restrictions	Yearlong
21	Labor to Memorial Day	Labor to Memorial Day	Labor to Memorial Day	No Restrictions
22	Labor to Memorial Day	Labor to Memorial Day	Labor to Memorial Day	Labor to Memorial Day
23	Yearlong	Labor to Memorial Day	Labor to Memorial Day	No Restrictions
25	4/1 to 11/15	4/1 to 11/15	4/1 to 11/15	4/1 to 11/15
26	Yearlong	Labor to Memorial Day	Labor to Memorial Day	Labor to Memorial Day
27	Yearlong	Yearlong	No Restrictions	No Restrictions

## Legend

### Travel Area Designation

- Closed to All Motorized Vehicles
- Motorized Vehicles, Except Snowmobiles, Limited to Designated Routes
- Motorized Vehicles, Including Snowmobiles, Limited to Designated Routes

### Travel Route Designation

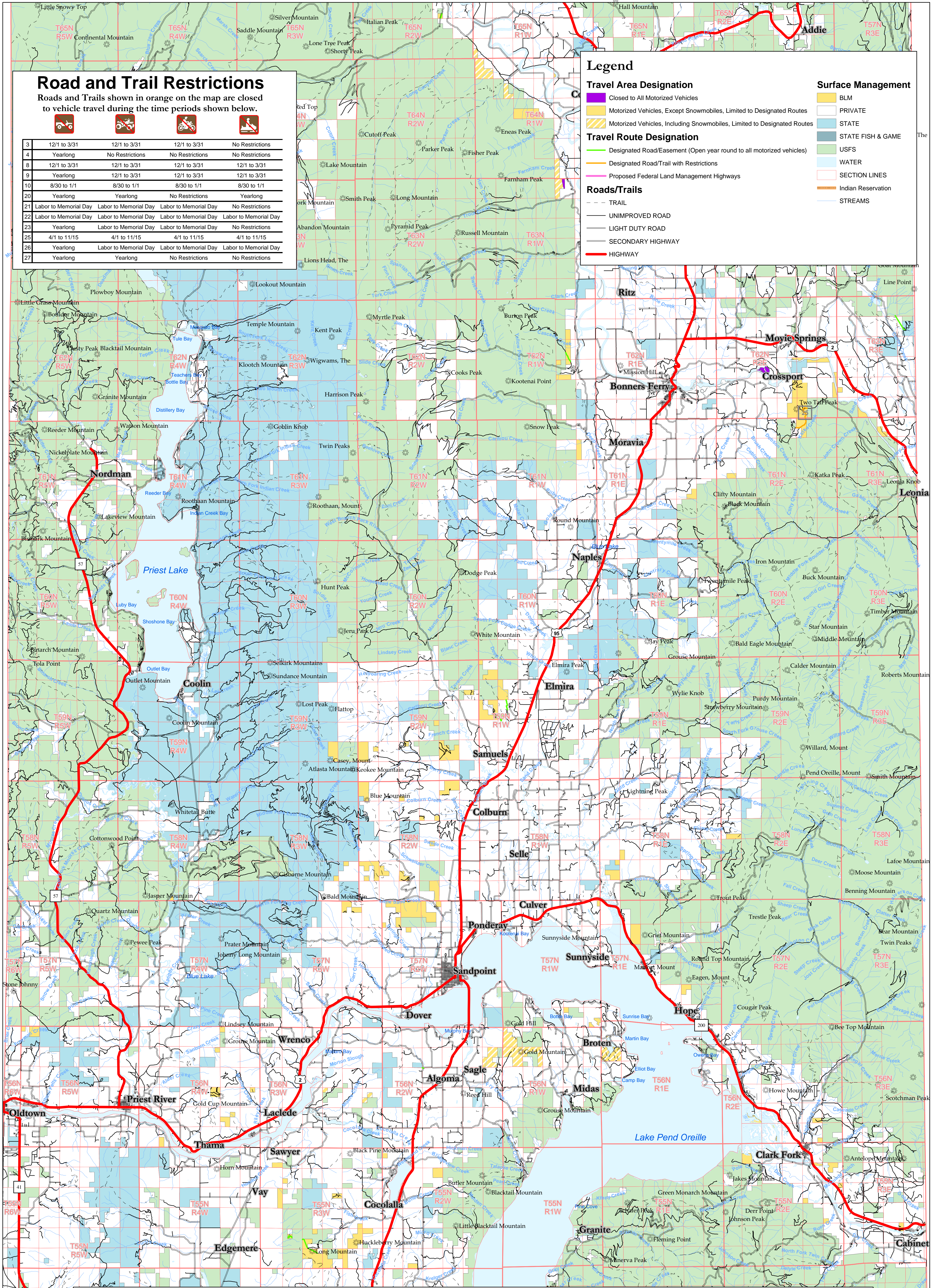
- Designated Road/Easement (Open year round to all motorized vehicles)
- Designated Road/Trail with Restrictions
- Proposed Federal Land Management Highways

### Roads/Trails

- TRAIL
- UNIMPROVED ROAD
- LIGHT DUTY ROAD
- SECONDARY HIGHWAY
- HIGHWAY

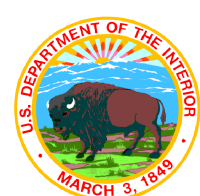
### Surface Management

- BLM
- PRIVATE
- STATE
- STATE FISH & GAME
- USFS
- WATER
- SECTION LINES
- Indian Reservation
- STREAMS



US Department of the Interior  
Bureau of Land Management

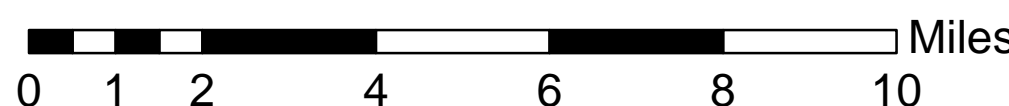
Coeur d'Alene Field Office  
Resource Management Plan



Coeur d'Alene, Idaho  
May 2007

# Motorized Route Designations - Selkirk Map 6

Motorized vehicle travel (except snowmobiles) is "limited" to designated roads and trails on all BLM managed land, except within areas designated as "closed" (see legend). Some of the designated roads and trails also have vehicle class or seasonal restrictions. There are no "open" areas - off-road motorized travel is not permitted, except for snowmobiles. Snowmobiles are allowed to travel off-road on all BLM lands, except where depicted otherwise on this map.



This map is intended for display purposes only. No warranty is made by the Bureau of Land Management as to the accuracy, reliability or completeness of these data for individual or aggregate use with other data, or for purposes not intended by BLM. This map may not meet National Map Accuracy Standards. This product was developed using a Geographic Information System and information may be updated without notification.

